

Better Mechanical Systems

Our designers' attention to detail extends to the Mirage motor compartment as well. Unlike other pedicare systems that rely on a mechanical drive shaft between the motor and pump, the Mirage uses a magnetic drive system that virtually eliminates dry-run damage and reduces maintenance because no drive shaft or seals are required.

A Superior Disinfecting System

The Mirage disinfecting system is a patent-pending, self-contained process that provides one-button, "hands free" bowl water circulation, disinfecting and sanitizing. The system allows the pedicare technician to quickly sanitize the station between clients and provides one-button overnight disinfecting. An integrated on-board disinfectant container dock makes changeover clean and easy; each bottle of Belvedere Fresh™ disinfectant comes with its own no-spill connector and provides a full day's supply of fluid. The system's two-bottle compartment allows for automatic changeover when one bottle is empty.

A Better Foot Spa

Pressurized water for foot spa treatment and power drain is managed by an independent pump that's separate from disinfecting and sanitation functions – that means better performance and lower maintenance costs over the life of the unit. The power drain feature assures standing water from the system is pumped into wastewater lines serving the Mirage; the drain can push water up to eight feet vertically to accommodate almost any plumbing configuration. And the Mirage features complete backflow protection for both drain and supply lines.

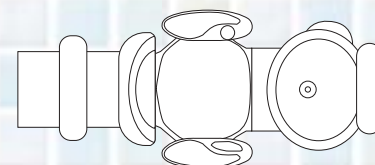
Everything about the Mirage Pedicare System emphasizes efficiency and quality. For example, Belvedere Fresh™ disinfectant is automatically injected into the system by a high-precision metering pump. And the foot bowl is made of durable, noise-limiting, stain-resistant cast iron enamel that's available in a variety of Belvedere colors.

Unit Dimensions

Side View



Top View



Footprint, length: 5' 9-1/4" from footrest to fully reclined chair back (another foot for cut-to-length shroud); 6'3" min. footprint, 7'3" max. footprint, 12" may be cut from rear shroud

Footprint, width: 35-3/4" from outside arm to outside arm

Full height: 4' 7-11/16" floor to top of chair, erect

Minimums for side-by-side units: 4' 5-1/8" drain to drain, 18" arm to arm

Electrical: 15 amp dedicated circuit with ground fault

Shipping: Chair is shipped in a sideways configuration (90-degree turn) to allow unit to fit through a standard 36-inch doorway

Weight: The Mirage weighs approximately 300 pounds

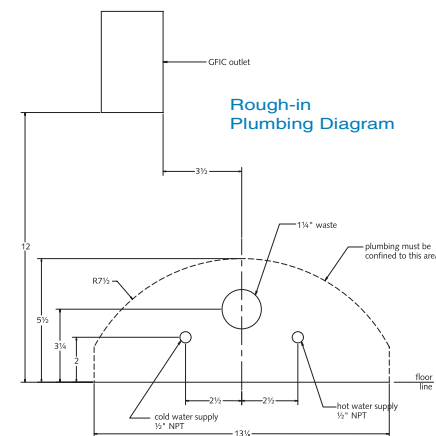
Outgoing water: 1-1/4" PVC

Incoming water: 1/2" NPT

Water pressure range: 30 to 90 psi, a water pressure regulator is recommended for installations with pressure beyond 90 psi

Water temperature range: 98° to 102°F

Plumbing configuration: All plumbing is routed through the back of the unit; plumbing installation can be in wall or in floor



mirage™



belvedere
Perfect design. Personal service.

BELVEDERE COMPANY
ONE BELVEDERE BOULEVARD
BELVIDERE, IL 61008
Phone in USA: 800/435-5491
In Illinois: 815/544-3131
In Canada: 800/463-0229
Fax: 800/626-9750

belvedere
Perfect design. Personal service.

Welcome to Mirage™

The Mirage™ Pedicare System from Belvedere is the first intelligent pedicare unit designed for the salon and spa industry. The Mirage is a feature-rich system that combines a fresh, modern design with advanced electronics and an exclusive water circulation/disinfectant system. The result is unmatched comfort and security for the client and quick, easy clean up and operation for the technician.

Thermostatic Water Control

The Mirage Pedicare System provides thermostatic control of water in the foot bowl and automatically regulates bowl water temperature up to 102°F. Both the client and technician have

controls to monitor and alter water temperature. In other systems technicians attempt to mix cold and hot water by hand touch trying to find the right temperature. With Mirage it's all automatic.

Dynamic Chair Design

The full-function, oversized Mirage chair provides a contoured design that wraps the client in high-density foam cushions for maximum comfort. A finger-tip control pad in the armrest allows the client to recline the chair 30 degrees, move the chair forward/back and up/down, and manage the massage function. The chair pivots 90 degrees left or right for safe, easy entry and exit. The chair is covered in soft, stain-resistant, high-grade vinyl upholstery and comes in a variety of Belvedere colors. The unit's footrest raises up to four inches for greater technician comfort.



Individual finger-tip touch keypads for client and technician ensure Mirage systems are easy to manage.



The Mirage Pedicare System features dual-jet whirlpool action for a gentle, quiet foot massage experience.



Under its elegant shroud, a tubular, welded-steel frame provides the foundation for the Mirage. The rigid steel design guards against warping and vibration, and can support up to 350 pounds.



Mirage chair arms made with Meganite™ offer a dynamic look and provide an easy-to-clean surface.



The Mirage frame is wrapped in a pressure-formed Kydex® shroud for a strong, beautiful base. Base colors include beige, light gray, dark gray and metallic black.



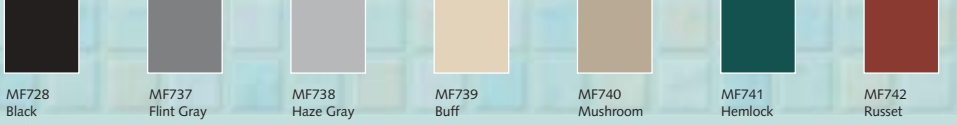
The Mirage chair and footrest are covered in soft, stain-resistant, high-grade vinyl and come in a variety of Belvedere colors.

Standard Mirage color options include:

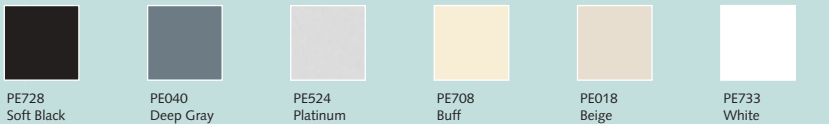
Shrouds



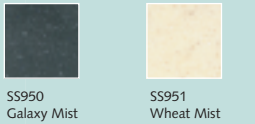
Chair Fabric



Basin Enamel



Arm Base



Call us at 1-800-435-5491 for the nearest showroom or distributor, or visit our web site at www.belvedereusa.com

Showroom locations: New York; Chicago; Boston; Los Angeles; Minneapolis; Cleveland; Atlanta; Washington, D.C.; Rochester, NY; Paducah, KY

Belvedere USA Corporation is a wholly owned subsidiary of the Wella Corporation

Inquire about the Belvedere Advantage Lease™ program for exceptional savings on your lease rate

Belvedere is a registered trademark of Belvedere USA Corporation
Mirage is a trademark of Belvedere USA Corporation
Belvedere Fresh is a trademark of Belvedere USA Corporation
Kydex is a registered trademark of Kleerdex Company
Meganite is a trademark of Meganite Inc.

